

IRS Waste compactor type 240

Sackpress for mixed waste.



Compact wet and dry material in 240 L sack. Woodboxes, plastic film, paper, tincans and many other type of waste and litter.

Compacted and ready in sacks.



Function and fields for usage.

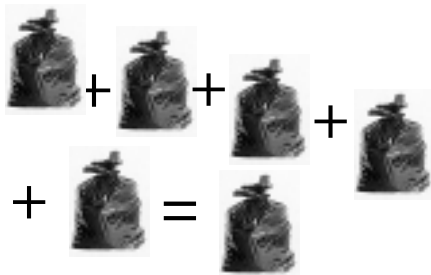
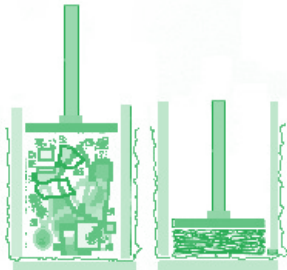
A robust, simple and compact machine. The press is equipped with four wheels that make it easy to move to the place where it most is needed. The sackpresse is used in all sectors, examples are shops, hospitals, restaurants, petrol stations and industry in common. The compacting of the material is done inside a steel barrel, on the outside of this barrel a plastic sack is mounted. When emptying the press, a valve is released and the steel barrel moves upwards by the hydraulic cylinder, the sack with its compressed material stay put on the bottomplate of the machine and can be transported away.

Ingeniörsfirma R.Sjöstrand AB



Box 1137, 141 23 Huddinge- Sweden 08-7741190, 7748590 Fax 08-7748770 Email SJOESTRAND.AB@SWIPNET.SE

It is so simple...



Compaction approximat 1:5 and weight on sack 20 - 50 kg depending on material and when change of sack has been done.

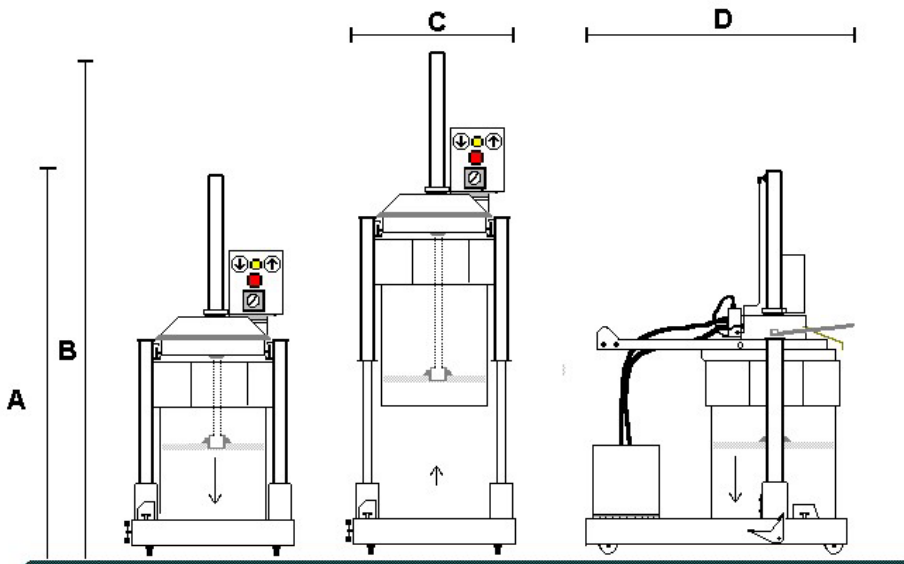
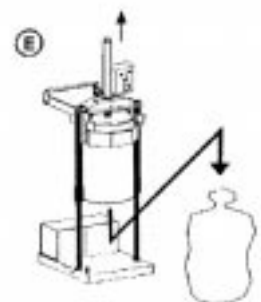
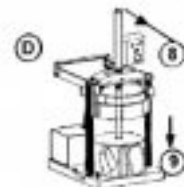
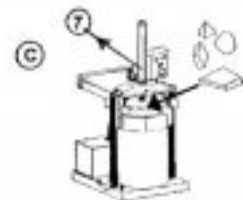
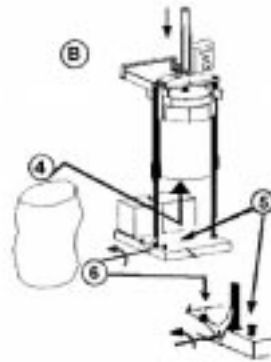
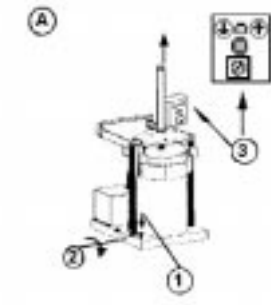
A) Turn on the main switch for electricity. Start preparing the machine for operation by pushing the release button 1. and unlock the mechanical pedal 2 and Pusch the buttom arrow no. 3.

B) The barrel will start lifting to the upper position where it stop. Put the sack over the cylinder and push down release button when the cylinder have come down to the lowest position lock the mechanical pedal.

C) Push the press head back on its slide and fill the barrel with material.

D) Slide the press head back over the barrel and push arrow button down. The press plate moves down and compact the material.

E) When the barrel is full and when there is no more space for new material in the barrel . Do as in figure (A) one more time. When the barrel lift the material will be left standing on the bottom of the machine.



Technical Data

TYPE	A	B	C	D	Weight	Ram-force	Filling Opening	Cycle time	Sack volume	Motor	Electrical data 1-Phase		
											V	Hz	A
IRS 240 K	1650	2350	780	980	310	3 ton	Ø 500	25-30	240	1,1	220	50	10
IRS 240 L	1910	2620	780	980	320	3 ton	Ø 500	28-35	240	1,1	220	50	10