

Balers for scrap and waste

Baling and cutting. Large and small equipments

One to three compression

AL50-1C	Automatic baler	One compression	sid 2-3
AL80-1C	Automatic baler	One compression	sid 2-3
AL 50-2C	Automatic baler	Two compression	sid 4-5
AL 80-2C	Automatic baler	Two compression	sid 4-5
AL 41-2C	Automatic baler	Two compression	sid 4-5
AL25-3C,	Automatic baler	Three compression	sid 6-7
AL30-3C	Automatic baler	Three compression	sid 6-7
AL45-3C	Automatic baler	Three compression	sid 6-7
AL 4000,	Moblle scrap baler		sid 8-9
AL 4032,	Moblle scrap baler		sid 8-9
AL 5000	Moblle scrap baler		sid 8-9
ALC 304	Shearbaler		sid 10-11
ALC 505	Shearbaler		sid 10-11
ALC 605	Shearbaler		sid 10-11
ALC 606	Shearbaler		sid 10-11
SW 1753	Automatic Baler for Urban Solid Waste		sid 12



Automatic Baler

One compression



AL 50-1C, AL 80-1C



AL50-1C, AL80-1C is a strong and compact machine particularly suitable for baling metal wastes, tin-cans and industrial working swarfs. Its pre-feeding hopper, placed on the charging opening, allows the baler to be fed in continuous. The horizontal guillotine-type lid of the compression box, equipped with interchangeable blades ensures material cutting.

The hydraulic power unit can be either incorporated to the baler, or separated. Al 50 Automatic continuous-feeding machine is the most suitable baler to those industries who, owning their own activity, have a number of working swarfs and cuts to be eliminated.

It is also the logical solution to be foreseen at the end of automatic plants for conveying swarfs and processing residues.

ING. FA:R. SJÖSTRAND AB

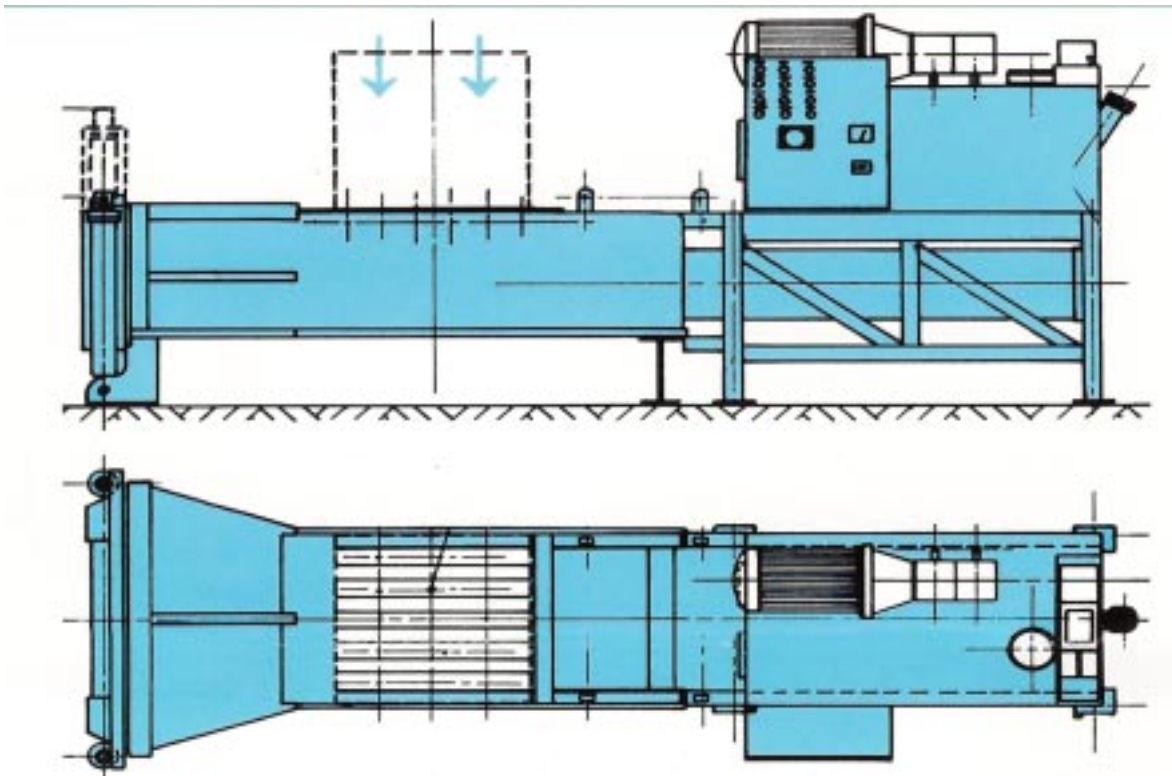
Box 1137, 141 23 HUDDINGE - SWEDEN Tel .
08-7741190, 7748590, Fax 08-7748770
Email contact@sjostrand.se
Hemsida www.sjostrand.se

- ◇ Lowers transport fees
- ◇ Reduces volume
- ◇ Improves recycling
- ◇ Liberates space
- ◇ Separates materials in an improved manner
- ◇ CE Marking

Automatic Baler
 For metal swarfs
 One compression
AL 50-1C, AL 80-1C



Technical characteristics	AL 50-1C	AL 80-1C
Charging box mm	630 x 490	740 x 840
Compression chamber mm	1330 x 500 x 300	1400 x 800 x 400
Bale dimensions	500 x 300 x Var	800 x 400 x Var
Electric engine	15 Kw	30 Kw
Axial thrust	56,5 ton	138 ton
Idel cycle time	40 sek.	50 sek.
Overall size mm	3650x1250x1850	5000x1650x1800
Total weight	3200 kg	8000 kg



ING. FA:R. SJÖSTRAND AB

Box 1137, 141 23 HUDDINGE - SWEDEN Tel . 08-7741190, 7748590, Fax 08-7748770
 Email contact@sjostrand.se Hemsida www.sjostrand.se

Automatic Baler



Lollini AL 50-2C
AL 80-2C
AL 41-2C



AL50-2C, AL80-2C AND AL41-2C, is a robust and compact press which, by all means of its two orthogonal compressions can produce a small high-density bale of metal scrap, cans, and industrial working swarfs.

The pre-charging hooper, placed on the loading opening, enables continuous feeding.

The horizontal guillotine-type lid of the loading opening is equipped with interchangeable blades.

The press box has anti-wear lining. The hydraulic power unit can be either incorporated into the baler or separated.

The AL50-2C press, automatic and with continuous feeding, is the ideal machine for factories with working swarfs and off-cuts, and it is the logic solution to complete automatic conveyors for swarfs and processing residues.

The same machine is manufactured in the AL80-2C version, with bigger loading opening and press box.

ING. FA:R. SJÖSTRAND AB

Box 1137, 141 23 HUDDINGE - SWEDEN Tel .
08-7741190, 7748590, Fax 08-7748770
Email contact@sjostrand.se
Hemsida <http://home.swipnet.se/sjostrandab>

- ◇ Lowers transport fees
- ◇ Reduces volume
- ◇ Improves recycling
- ◇ Liberates space
- ◇ Separates materials in an improved manner
- ◇ CE Marking

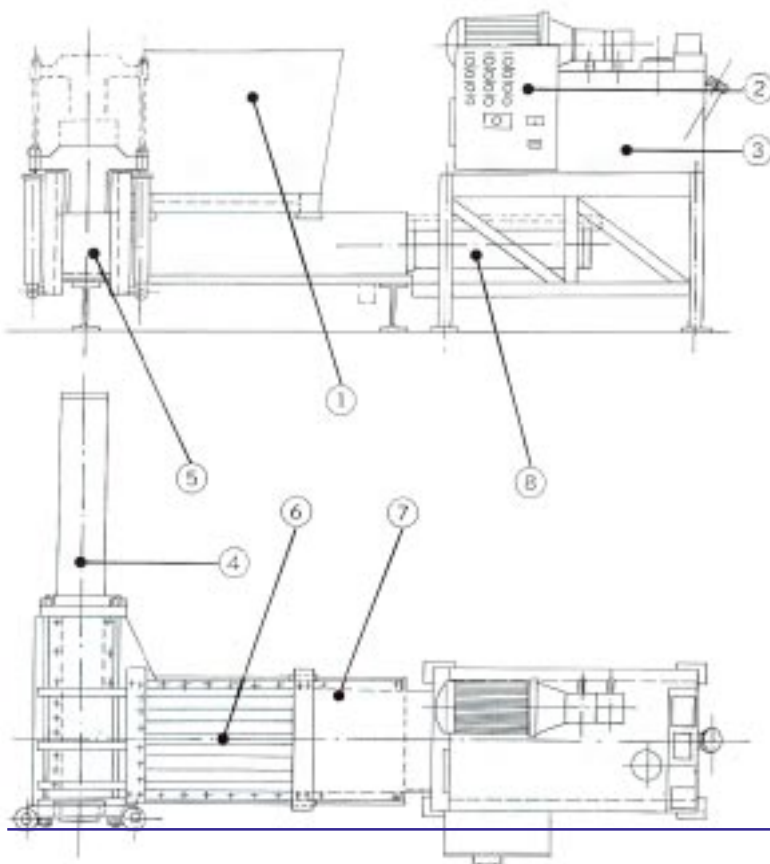
Automatic Baler for metal swarfs

One compression

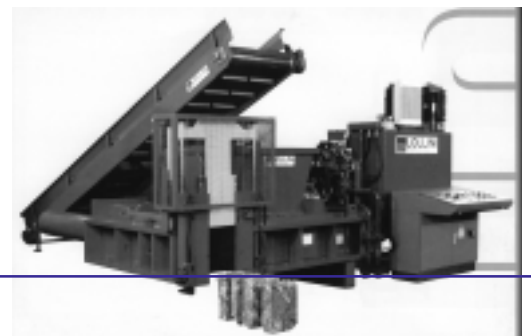


AL 50-2C, AL 80-2C, AL 41-2C

Technical characteristics	AL 50-2C	AL 80-2C	AL 41-2C
Loading opening	700 x 490	740 x 840	1250 x 1250
Press box	1130 x 500 x 300	1400 x 800 x 400	1900 x 1250 x 400
Bale size	300 x 200 x längd	400 x 300 x längd	400 x 400 x längd
Electric Motor	22 Kw	30 Kw	75 Kw x 2
Push ram force	56,5 ton	130 ton	160 ton
Lateral ram force	56,5 ton	130 ton	160 ton
Specific pressure	94 kg/cm ²	108 kg/cm ²	---
Operating pressure	180	180	180
Idel time	38 sek.	63 sek.	28 sek.
Overall size mm	3300x2500x1950	500x3800x2300	5490x5100x2126
Total weight	3600 kg	11.600 kg	19.900 kg



- 1 Hopper
- 2 Electric panel
- 3 Hydraulic control unit
- 4 Longitudinal cylinder
- 5 Hydraulic shutter
- 6 Internal rifling
- 7 Press body
- 8 Axial cylinder



ING. FA:R. SJÖSTRAND AB

Box 1137, 141 23 HUDDINGE - SWEDEN Tel . 08-7741190, 7748590, Fax 08-7748770
 Email contact@sjostrand.se Hemsida www.sjostrand.se

Automatic Balers



Three compression

AL25-3C, AL30-3C, AL45-3C



AL25-3C, AL30-3C, AL45-3C Machines of AL30 3C series are continuous feed automatic balers, with three orthogonal compressions to reduce metal residues and ferrous and non-ferrous cuttings into high density bales. Their compression boxes are fully covered with anti-wear steel plates. Closing of their big charging box is ensured by the horizontal guillotine-type lid which cuts the protruding material and effects the first compression. The vertical compression and then the final side one get the high-density bale formed. Then the bale is ejected through a side shutter. The hydraulic unit is connected to the balers by flexible pipes suitable to high pressures. The control console is equipped with a synoptic panel and contains all of the checking systems.

ING. FA:R. SJÖSTRAND AB

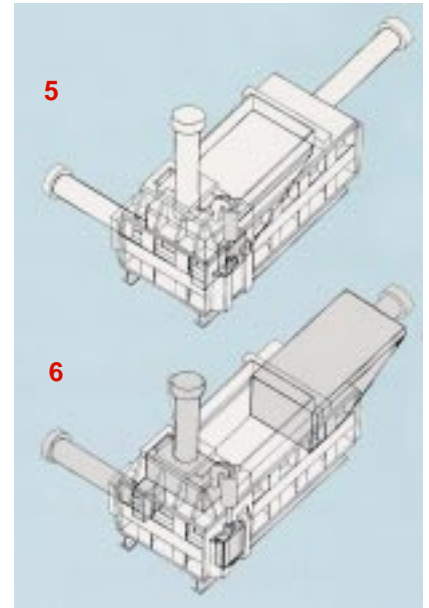
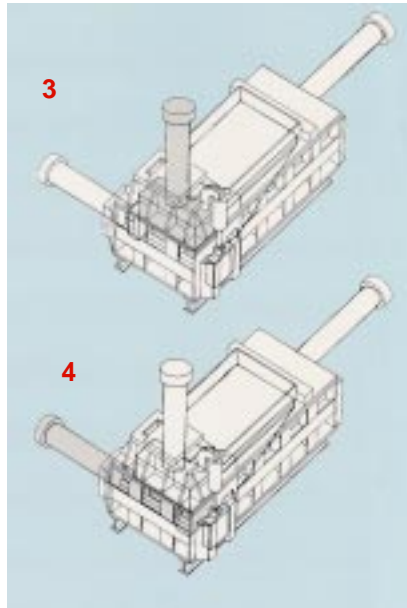
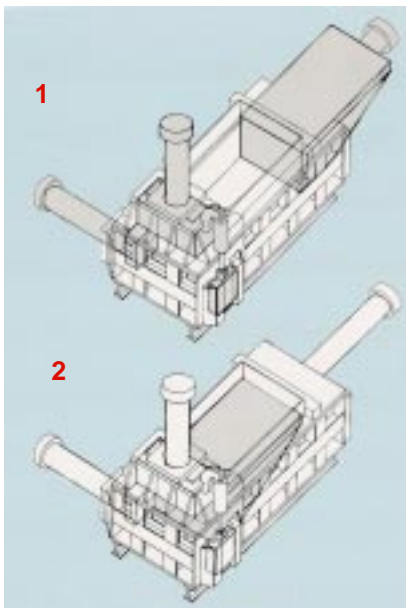
Box 1137, 141 23 HUDDINGE - SWEDEN Tel .
08-7741190, 7748590, Fax 08-7748770

Email contact@sjostrand.se

Hemsida www.sjostrand.se

- ◇ Minskar transport kostnader
- ◇ Reducerar volymen
- ◇ Förbättrad återvinningen
- ◇ Frigör utrymme
- ◇ Separering material lättare
- ◇ CE Märkt

Technical characteristics	AL 25-3C	AL 30-3C	AL 45-3C
Loading opening	1400 x 950	2000 x 1200	2200 x 1250
Press box	2000 x 1000 x 800	2600 x 1250 x 800	3000 x 1300 x 1200
Bale size	250 x 250 x Var	300 x 300 x Var	400 x 500 x Var
Weight of steel bale	45 kg	90 kg	270 kg
Bale Density	kg/dmc 3,2	kg/dmc 3	kg/dmc 3
Electric Engine	2 x 45 Kw	2 x 55Kw	3 x 55 Kw
Axial thrust	100 ton	125 ton	200 ton
Vertical thrust	100 ton	125 ton	200 ton
Lateral thrust	100 ton	125 ton	280 ton
Specific pressure	160 kg/cm ²	139 kg/cm ²	140 kg/cm ²
Operating pressure	bar. 260	260	320
Idel cycle	45 sek.	45 sek.	50 sek.
Overall baler weight	28.000 kg	36.000 kg	45.000 kg



1 The material is loaded into the compression chamber, which is open.

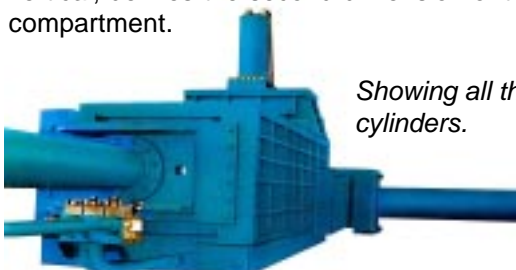
2 The first compression is made. After the trimming of excess material, the compression continues its cycle until the two final forms are created.

3 The second compression is started, this time vertical, defines the second dimension of the existing compartment.

4 Finally, the third compression, which reaches the maximum possible thrust by the dimensions of its cylinder and the work pressure, determines the third dimension of the bale, which varies according to the amount of material which is being fed.

5 The bale is ejected through a lateral door.

6 The cylinders return to their original positions. The loaded material in the loading hopper drops into the chamber and the process is repeated.



Showing all three cylinders.



Separated hydraulic unit.

ING. FA:R. SJÖSTRAND AB

Box 1137, 141 23 HUDDINGE - SWEDEN Tel . 08-7741190, 7748590, Fax 08-7748770

Email contact@sjostrand.se Hemsida www.sjostrand.se

Scrap Baler

Mobile scrap baler



AL 4000, AL 4032, AL 5000



AL 4000, AL 4032, AL 5000 The AL5000 balers can be supplied either stationary or mobile mounted on a trailer. The large bailing chamber can be used to compress an entire car body or volumes of mixed light scrap. The extended rotating loading arm equipped with a grab allows one man operation i.e. load the machine, make the compaction and remove the bale. The unique hinged wings incorporating a hammer action are ideal for compacting and reducing bulky scrap items. The final compression is achieved by two opposed heavy duty rams forming a dense bale at the centre of the chamber. The manual operated lever controls are housed in the operator's cabin.

ING. FA:R. SJÖSTRAND AB

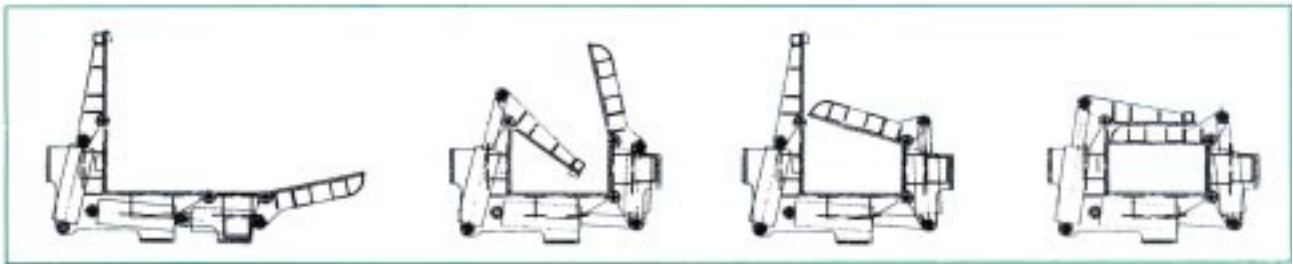
Box 1137, 141 23 HUDDINGE - SWEDEN
Tel . 08-7741190, 7748590, Fax 08-7748770
Email contact@sjostrand.se
Hemsida www.sjostrand.se

- ◇ Lowers transport fees
- ◇ Reduces volume
- ◇ Improves recycling
- ◇ Liberates space
- ◇ Separates materials in an improved manner
- ◇ CE Marking

Mobile scrap baler



Lollini AL 4000, AL 4032, AL 5000



Wings - Pre-compression with wings that folds in and creates a pressure chamber where axial feed picks up. For a bigger capacity and easier feeding.

Technical characteristics	AL 4000	AL 4032	AL 5000
Open press-box	mm. 4200 x 2500	4200 x 2200	5000 x 2600
Closed press-box	mm. 4200 x 1000 x 500	4200 x 800 x 600	5000 x 1000 x 600
Bale dimensions	mm. 1000 x 500 x Lenght	800 x 600 xLenght	1000 x 600 xLenght
Diesel engine	120 Kw	120 Kw	120 Kw
Lids thrust	130 ton	130 ton	130 ton
Axial cylinders thrust	123 ton	123 ton	123 ton
Idle cycle time	sec. 110	110	110
Overall size	mm. 11100x2500x4000	11100x2500x4000	11300x2500x4000
Global weight	kg. 32500	32500	35800

ING. FA:R. SJÖSTRAND AB

Box 1137, 141 23 HUDDINGE - SWEDEN Tel . 08-7741190, 7748590, Fax 08-7748770
 Email contact@sjostrand.se Hemsida www.sjostrand.se



Shearbalers

ALC 300, ALC 500, ALC 600



ALC 300, ALC 500, ALC 600 The shear-balers type ALC can be mobile or stationary with 300, 500 and 600 MT cutting force. They can process a wide range of material, both heavy scrap of different sizes and length, and light bulky scrap. A large quantity of scrap is loaded into the press box, which is completely lined with anti-wear steel, then reduced by the side compression wing system to the size of the shear-head opening. The axial ram pushes the logger under the hold-down clamp for a further vertical reduction and a more regular cut at adjustable length.

Alternatively it is possible to make a proper bale, which will be automatically ejected. Shearing and bailing are automatic and it is possible to install a remote control. The mobile machines on semi-trailer with hydraulic stabilizers complete with diesel engine, crane, grab, operator cabin, are independent machines that can go where scrap is produced or stocked, thus saving on transport costs.

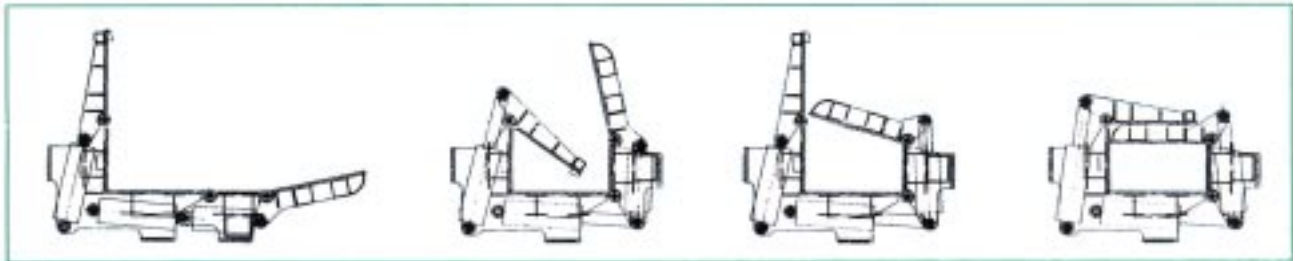
ING. FA:R. SJÖSTRAND AB

Box 1137, 141 23 HUDDINGE - SWEDEN Tel .
08-7741190, 7748590, Fax 08-7748770
Email contact@sjostrand.se
Hemsida www.sjostrand.se

- ◇ Lowers transport fees
- ◇ Reduces volume
- ◇ Improves recycling
- ◇ Liberates space
- ◇ Separates materials in an improved manner
- ◇ CE Marking

Shear Balers

ALC 304 , ALC 505, ALC 605, ALC 606



Wings - Pre-compression with wings that folds in and creates a pressure chamber where axial feed picks up. For a bigger capacity and easier feeding.

Technical characteristics		ALC 304	ALC 505	ALC 605	ALC 606
Cutting force	t.	300	500	600	600
Cutting width	mm.	800	800	820	820
Cutting height	mm.	600	610	610	610
Clamp force	t.	--	80	80	80
Cuts per minute		4	6 / 7	6 / 7	6 / 7
Box size	mm.	4200 x 800	5000 x 2300	5000 x 2300	6000 x 2300
Bale size	mm.	800x600x Var	800x600xVar	800x600xVar	800x600xVar
Wing force	t.	160 ton	160 ton	160 ton	240 ton
Max ram force	t.	120 ton	154 ton	154 ton	154 ton
Axial feed	mm.	200+1000	200+1500	200+1500	200+1500
Diesel power	Kw.	90 Kw	165 Kw	165 Kw	165 Kw
Overall size	mm.	12500x3000x240	12500x3100x2400	12500x3100x2400	12500x3100x2400

ING. FA:R. SJÖSTRAND AB

Box 1137, 141 23 HUDDINGE - SWEDEN Tel . 08-7741190, 7748590, Fax 08-7748770
 Email contact@sjostrand.se Hemsida www.sjostrand.se

Automatic Baler for Urban Solid Waste



SW 1753

Horizontal baler for urban solid waste.

SW 1753 is a horizontal automatic baler at continuous feed which, when used in a selection and processing plant of Urban Solid Waste, can reduce the dry and not recyclable fraction of the waste itself into high-density bales, suitable to provide energy. SW 1753 is composed of a weighing scale fed with the waste by a conveyor belt and placed above the charging box opening; two opposite lids, hydraulically operated, will tamp the waste inside the chamber and then a big axial cylinder will compress the material. The Bale will then be conveyed into a tunnel and ejected from the baler by a lateral cylinder. One 90-kg bale is ejected every 50 seconds. Bale sizes are: 25 cm height, 75 cm width and 75 cm leght. The formed baleis then automaticly tied by four metallic straps and it is now ready to provide energy.



Technical Characteristics

Opened charging box:	2500x720x1000 h.
Compression chamber:	3500x720x220
Bale size:	720x750x250
Height:	11500 mm
Leght:	5500 mm
Width:	4700 mm
Overall wieght	30 ton
Idle cycle	50 sek
Tampering lid thrust:	126 ton
Axial thrust:	170 ton
Electric power installed:	260 kw

Distributor:



ING. FA:R. SJÖSTRAND AB

Box 1137, 141 23 HUDDINGE - SWEDEN
Tel . 08-7741190, 7748590, Fax 08-7748770
Email contact@sjostrand.se
Hemsida www.sjostrand.se